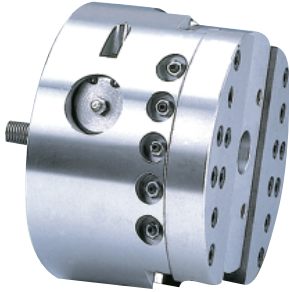
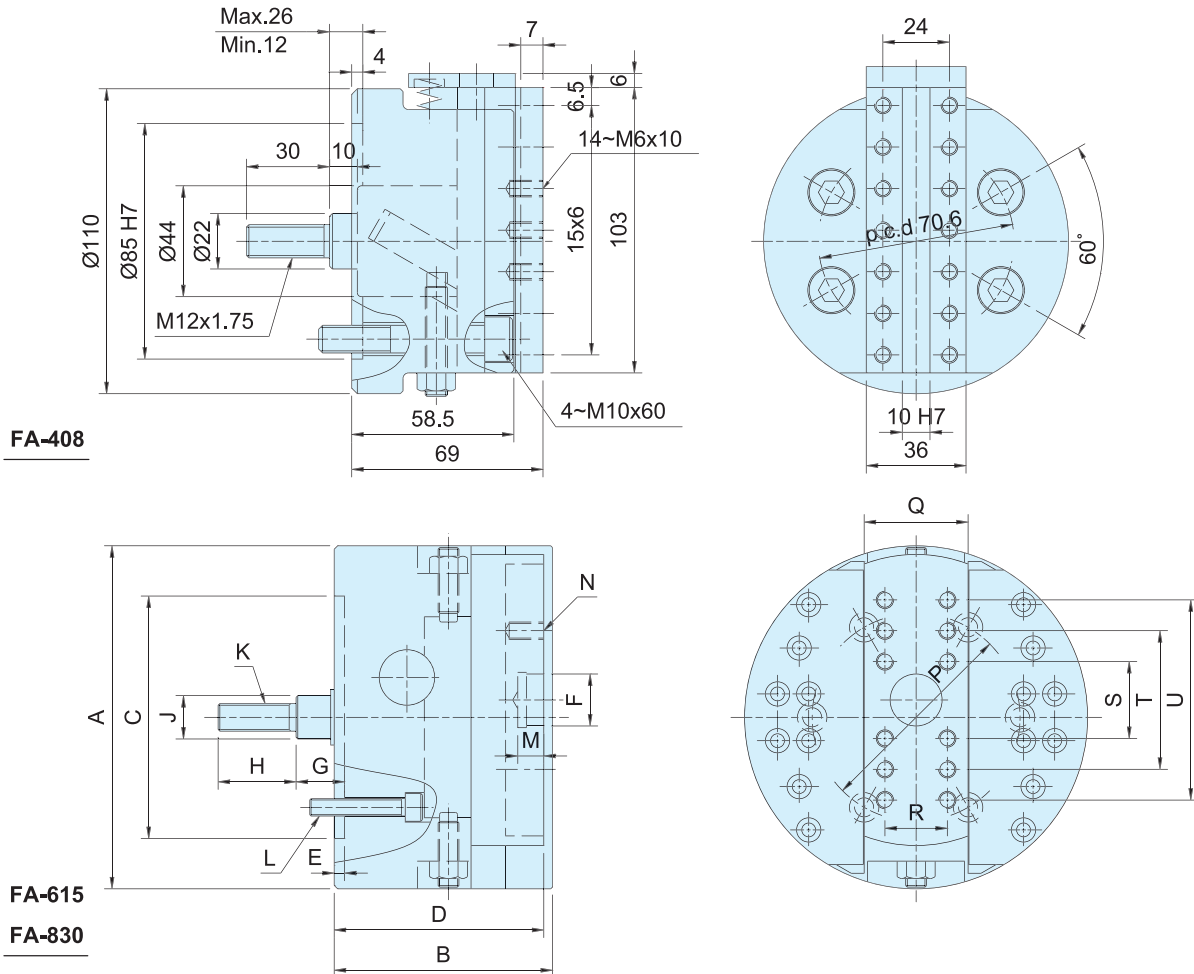


展刀搪溝頭 >>> FA

SINGLE-SLIDE FACING HEAD



- 進給機構是以齒條與齒輪的傳動方式為之，進給速度穩定，進給速度與行程的調整亦非常容易。
- 摺動面均經硬化及精密研磨，剛性與耐久性非常良好。
- Feed mechanism is transmitted by Rack and Piston, with steady feed speed.
- Simple adjustment for feed speed and stroke.
- Matching surfaces of all parts hardened, ground and lubricated directly.
- 與行控型迴轉油壓缸搭配使用。
- Suitable for using with RS type cylinder.



保留規格修改的權利  
Subject to technical changes.

規格 Spec. 型號 Model	楔心行程 mm Plunger stroke(Dia.)	滑座行程 mm Slider stroke	最高迴轉數 min <sup>-1</sup> (r.p.m) Max. speed	最大進給速度 mm/min. Max. feed speed	重量 kg Weight	適用油壓缸 Matching cylinder	最大使用壓力 Max. pressure Mpa (kg/cm <sup>2</sup> )
FA-408	14	8	1600	400	4.2	RS-6520N	1.0(10)
FA-615	15	15	1200	300	11.9	RS-6520N	1.2(12)
FA-830	30	30	800	240	23.9	RS-6530N	1.8(18)

寸法 Size 型號 Model	A	B	C(H7)	D	E	F(H7)	G		H	J	K	L	M	N	P	Q	R	S	T	U
							max	min												
FA-615	150	107	110	102	5	25	40	25	35	20	M12x1.75	3~M10x40	12	8~M8x16	82.6	50	32	32	68	-
FA-830	198	126	140	121	6	30	54	24	45	25	M16x2	6~M10x55	15	12~M10x20	120	60	36	40	80	120