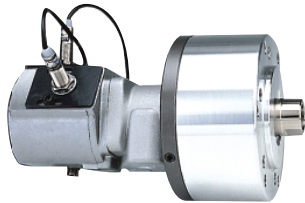
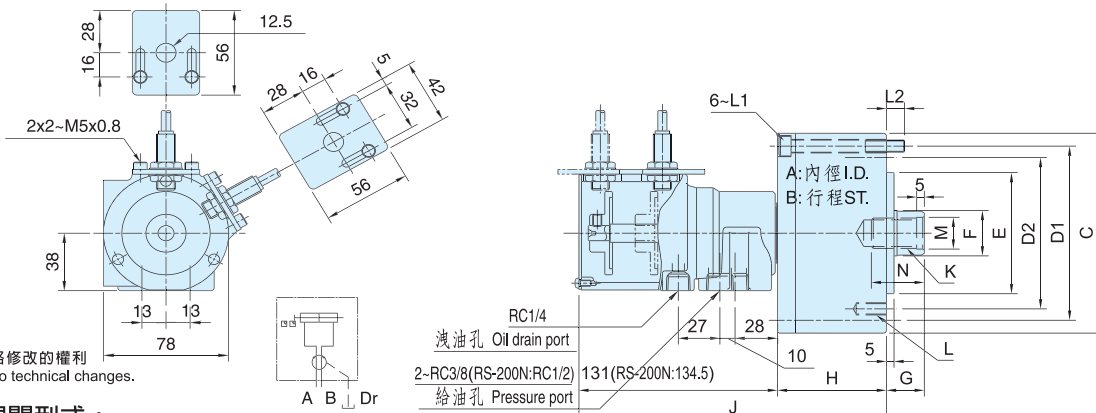


行程控制型迴轉油壓缸 >>> **RS-N** 高速短型

ROTATING HYDRAULIC CYLINDER WITH STROKE CONTROL



- 短型，高速，行程控制型迴轉油壓缸。
- 感應式近接開關，行程調整容易，可確認油壓缸正確作動。
- 安裝時可由後端鎖固之。
- For short form, high speed and stroke control.
- To ensure safe power chuck operations by conforming movement of the piston in the cylinder.
- Can screw it from the rear end of the cylinder when mounting.
- 洩油孔配管務必單獨接回油壓槽，以避免產生背壓。
- The drain port should be independently connected to oil tank to avoid back pressure.



規格 Spec.	活塞面積 Eff. piston area cm <sup>2</sup>		行程 mm	最高迴轉數 min (r.p.m)	最高使用壓力 MPa	I kg-m	重量 kg	
型號 Model	押側 Extend	拉側 Retract	Piston stroke	Max. speed	Max. pressure (kgf/cm <sup>2</sup> )	Moment of inertia	Weight	
RS-6520N	32.0	28.3	20	6000	4.0 (40)	0.01	3.2	
RS-6530N			30					3.3
RS-75N	43.0	37.1	15				0.013	3.7
RS-7530N			30				0.04	4.8
RS-100N	77.4	71.5	20	0.05		7.3		
RS-125N	121.6	113.1	25	0.16		10.6		
RS-150N	175.6	160.8	30	0.29		15.9		
RS-200N	313.0	290.4	35					

寸法 Size	A	B	C	D1	D2	E	F	G		H	J	K	L	L1	L2	M	N
型號 Model								h7	max.	min.							H8
RS-6520N	65	20	97	80	60	25	25	45	25	62	193	M16x2.0	6~M8x16	M6x70	14.5	17	30
RS-6530N		30							15	57	203			M6x80			
RS-75N	75	15	107	90	65	30	30		30	57	188	M20x2.5	6~M10x20	M8x60	12	21	35
RS-7530N		30					15		72	203	M8x75						
RS-100N	100	20	132	115	100	80	35	50	25	82	213	M24x3.0	6~M12x20	M8x85	16	31	45
RS-125N	125	25	160	140	130	110	45	55		95	226	M30x3.5	12~M12x24	M10x100			
RS-150N	150	30	190	170													
RS-200N	200	35	245	220	145	120	55	75	35	115	249.5	M36x4.0	12~M16x30	M10x125	21	37	60