

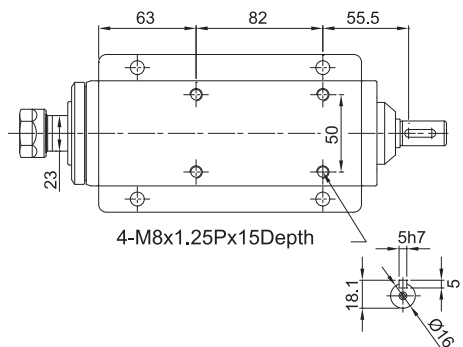
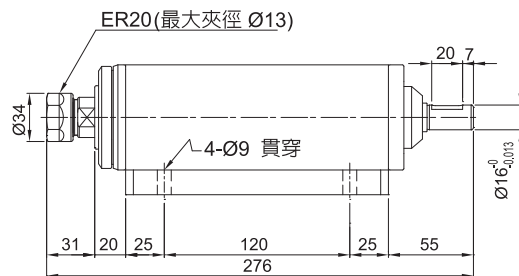
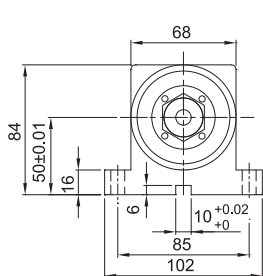
主軸頭 >>>



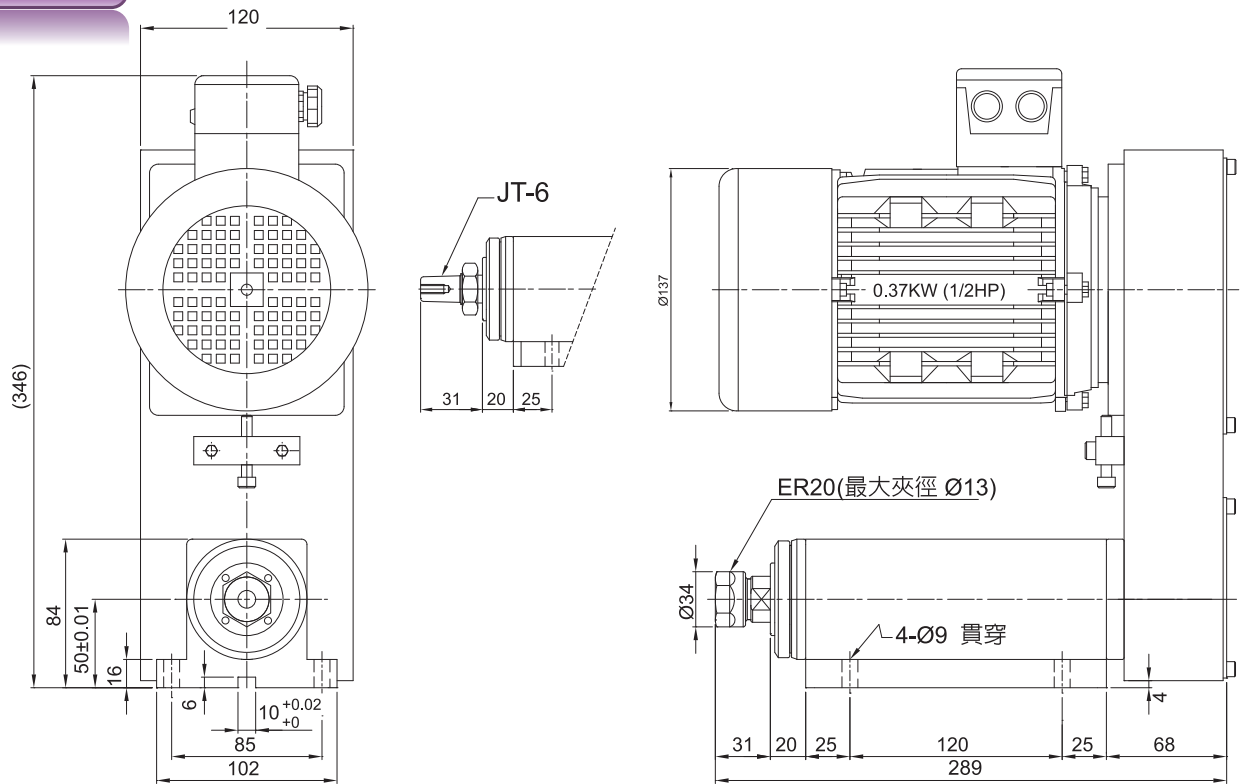
SW-20B

搪銑主軸頭 Boring & Milling Spindles Units

規格 Norms	Model	SW-20B	SW-20BH
主軸軸承	MaTappiSpindle Bearing	32004-2 6004Z-2	7004-4
容許轉速	Spindle Max. Speed	6000RPM	10000RPM
上升溫度	Temperature Rise	20°C	20°C
容許馬力	Maximum use of motor	0.75KW(1HP)	
主軸真圓度	Spindle Roundness	主軸與刀具配合面 MAX: 0.005mm	
潤滑方式	Lubrication method	Grease 潤滑油脂	
淨重	Net Weight	10kg	



SW20B-ER20-A



SW20B-ER20-C

