

主軸頭 >>>

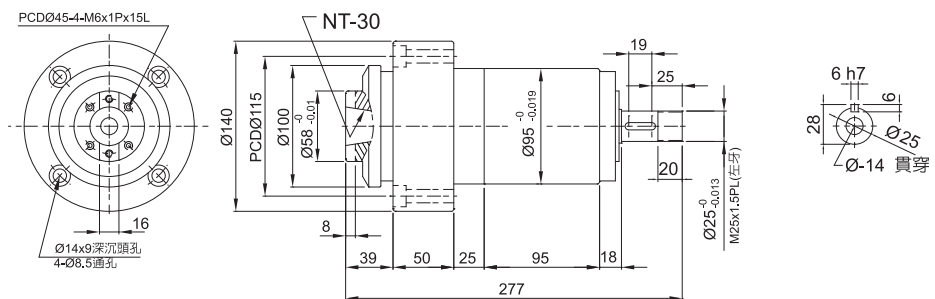


SW-30

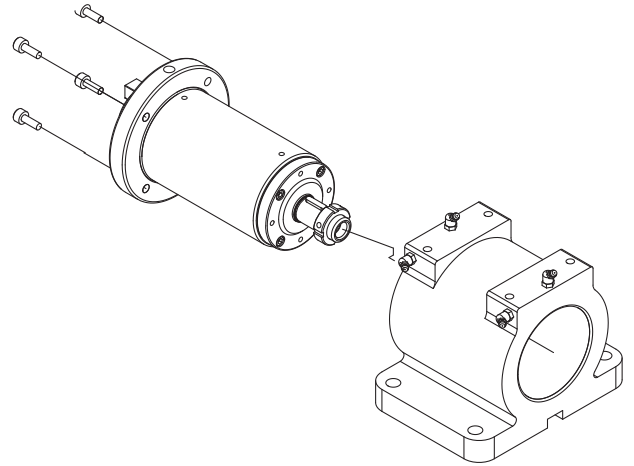
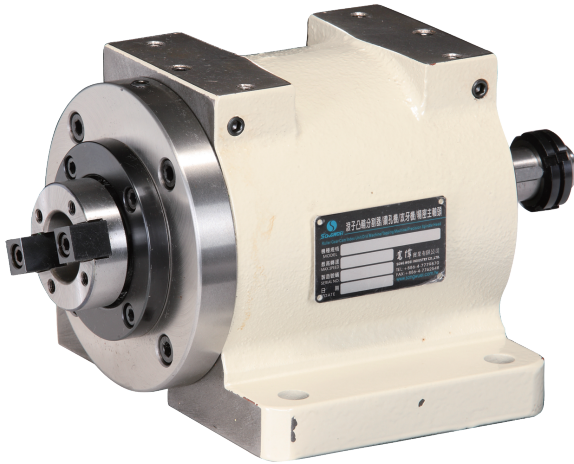
搪銑主軸頭 Boring & Milling Spindles Units

規格 Norms	Model	SW-30	SW-30H	SW-30C
主軸軸承	MaTappiSpindle Bearing	32206-2 6206-2	7206-4	7206-P4-4
容許轉速	Spindle Max. Speed	3000RPM	10000RPM	12,000RPM
上升溫度	Temperature Rise	20°C	20°C	15°C
容許馬力	Maximum use of motor	1.5KW(2HP)		
主軸真圓度	Spindle Roundness	主軸與刀具配合面 MAX: 0.005mm		
潤滑方式	Lubrication method	Grease 潤滑油脂		
淨重	Net Weight	12kg		

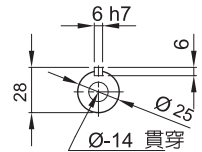
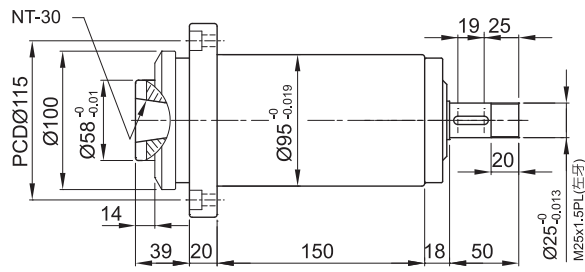
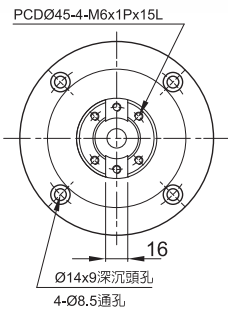
SW30R-NT30



主軸頭 >>>



SW30C-NT30



SW30CB-NT30

