

主軸頭 >>>

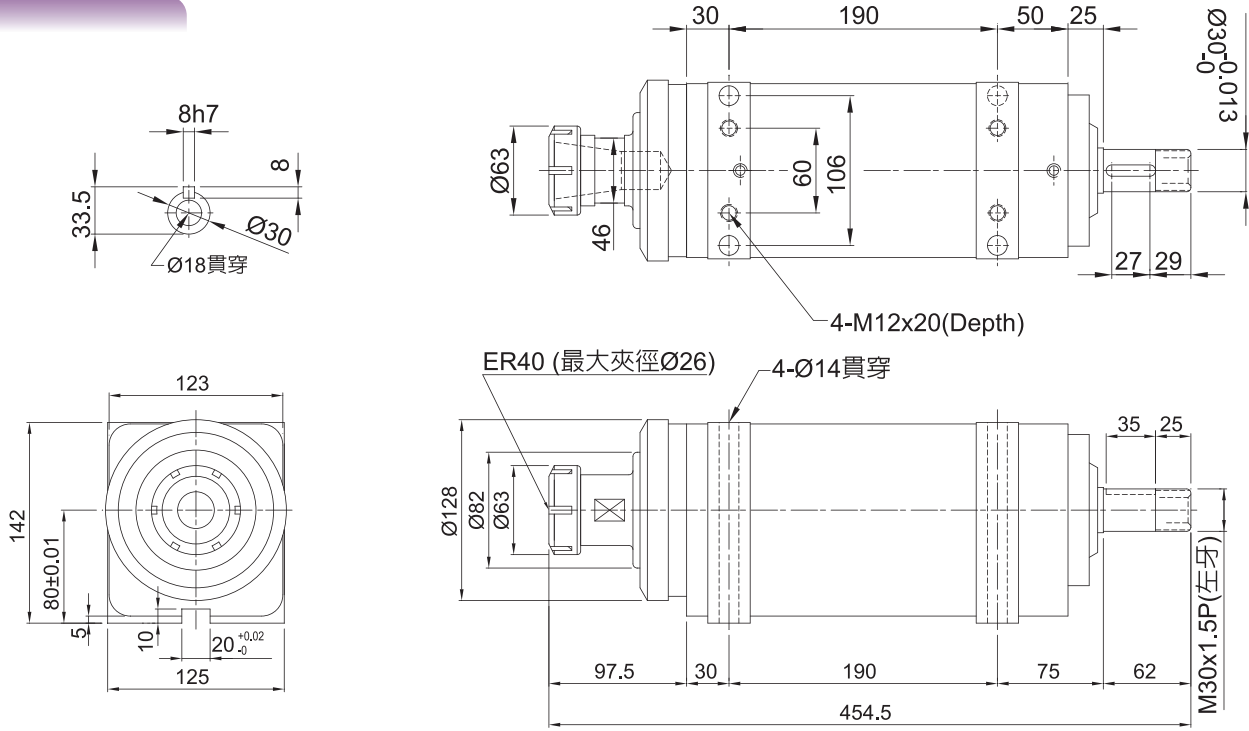


SW-40 / SW-50

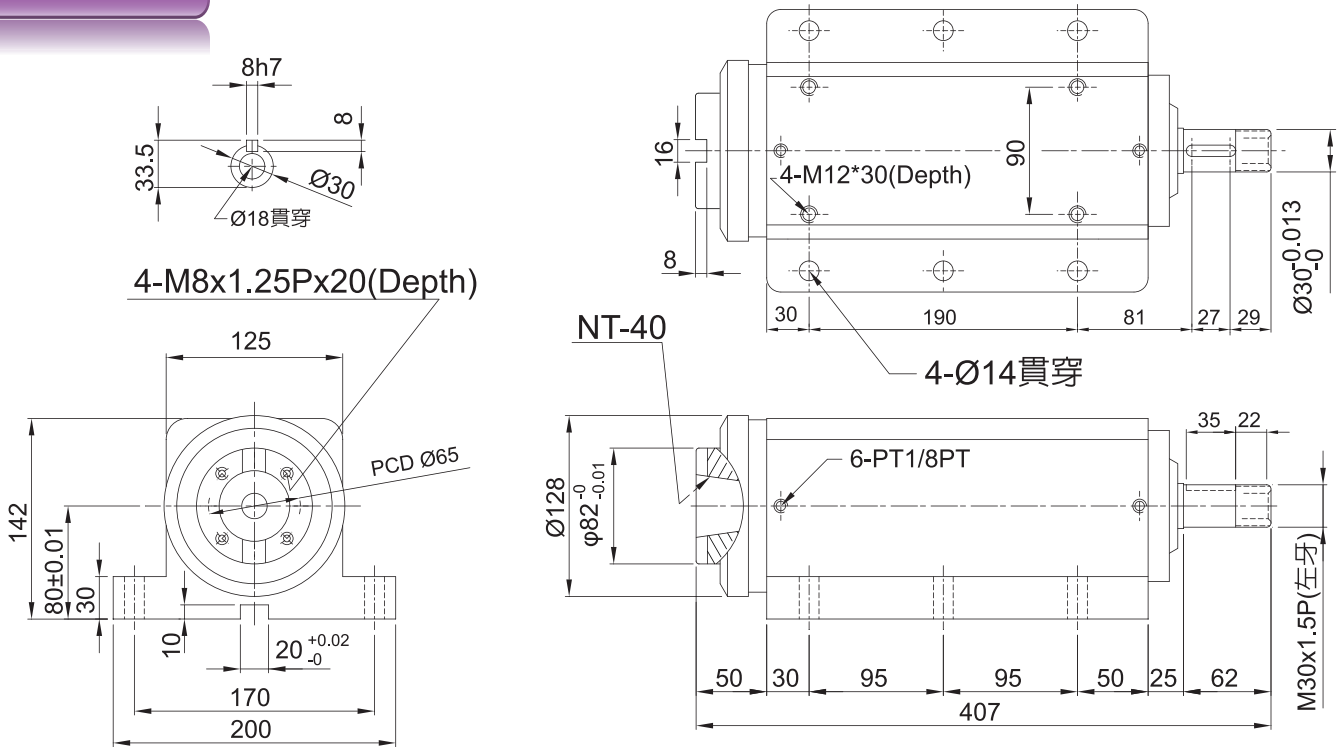
搪銑主軸頭 Boring & Milling Spindles Units

規格 Norms	Model	SW-40	SW-40H	SW-50	SW-50H
主軸軸承	Spindle Bearing	32208/6208Z-32207/6207Z	7208-2 7207-2	32010/6010Z-32009/6009Z	7010-2 7009-2
容許轉速	Spindle Max. Speed	2500RPM	8000RPM	2100RPM	6000RPM
上升溫度	Temperature Rise	20°C	20°C	20°C	20°C
容許馬力	Maximum use of motor	2.2KW(3HP)		2.2KW(3HP)	
主軸真圓度	Spindle Roundness	主軸與刀具配合面 MAX: 0.005mm		主軸與刀具配合面 MAX: 0.005mm	
潤滑方式	Lubrication method	Grease 潤滑油脂		Grease 潤滑油脂	
淨重	Net Weight	32kg		35kg	

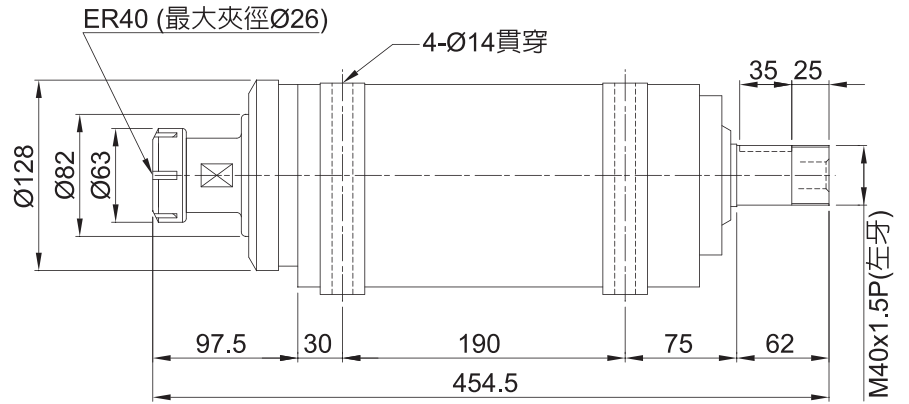
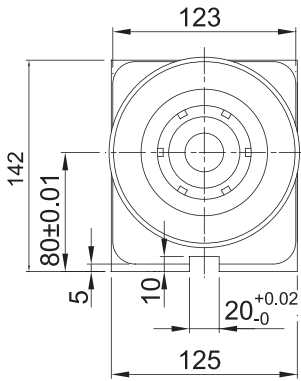
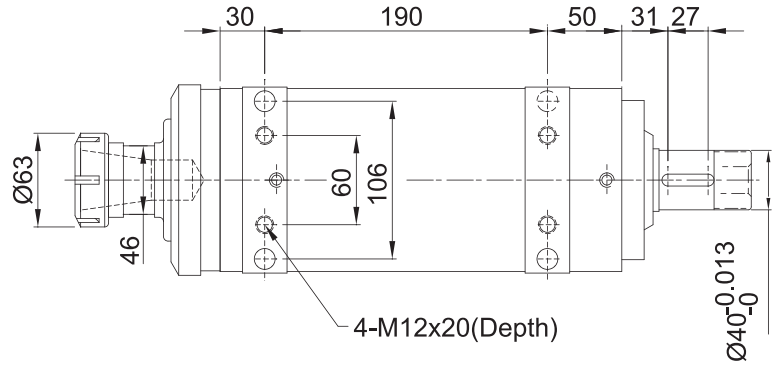
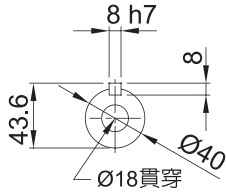
SW40A-ER40



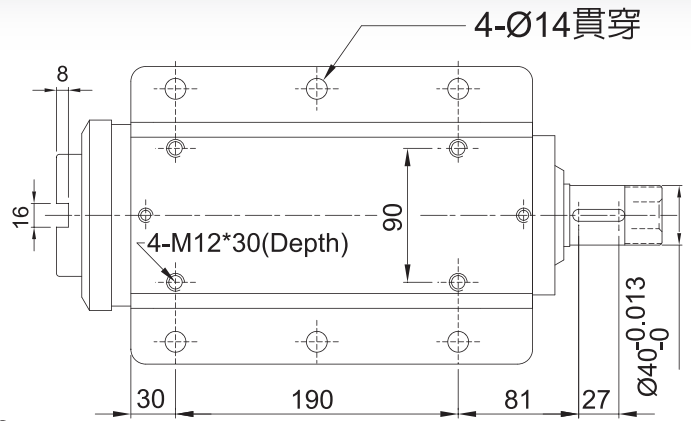
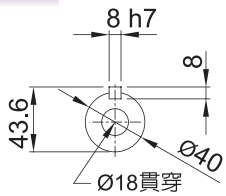
SW40B-NT40



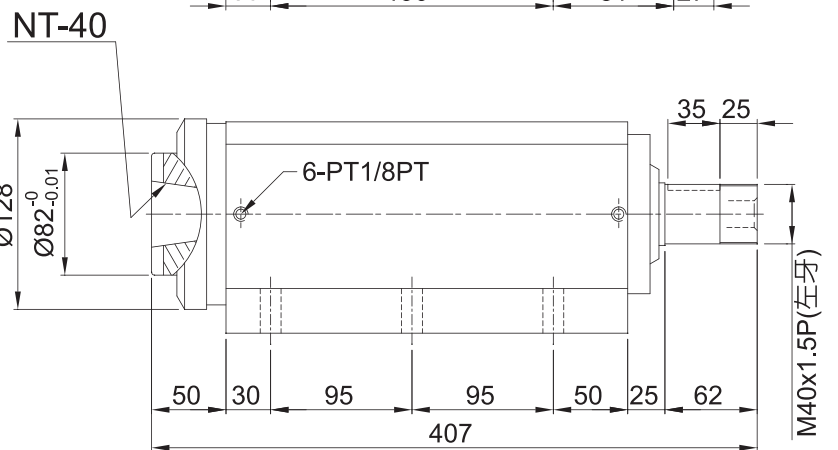
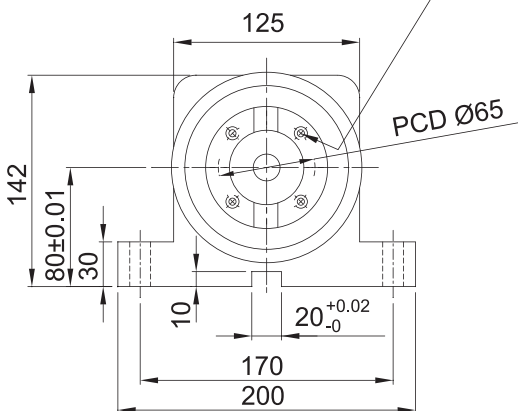
SW50A-ER40



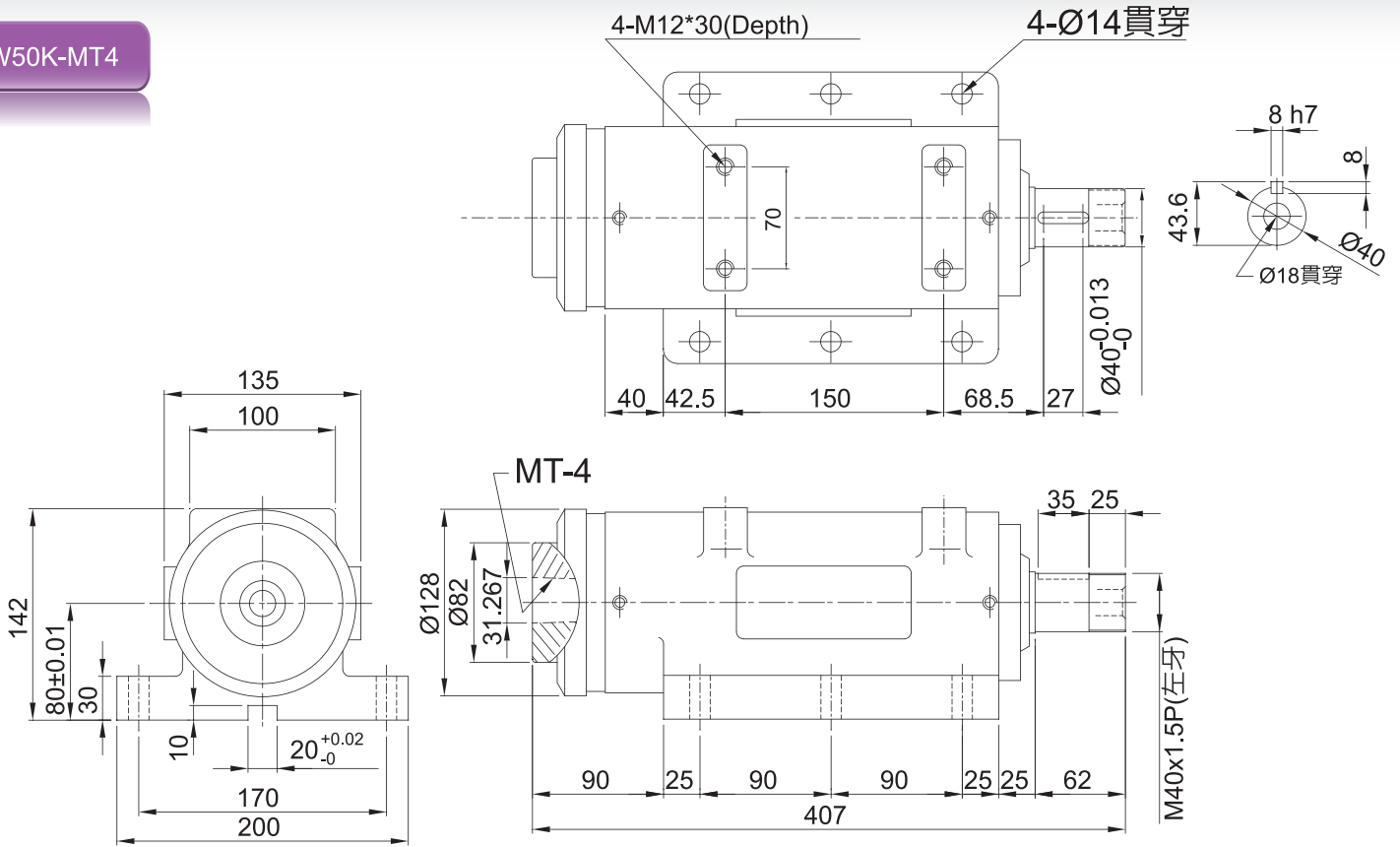
SW50B-NT40



4-M8x1.25Px20(Depth)



SW50K-MT4



SW50R-FA50

