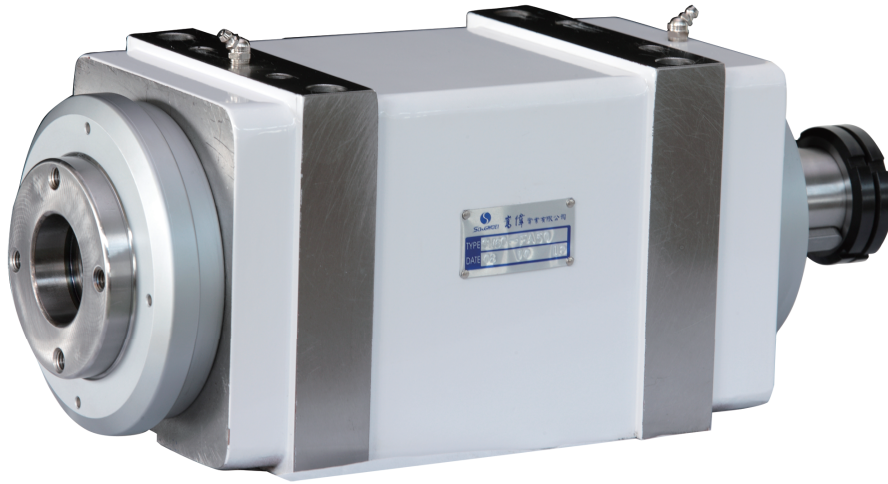


主軸頭 >>>

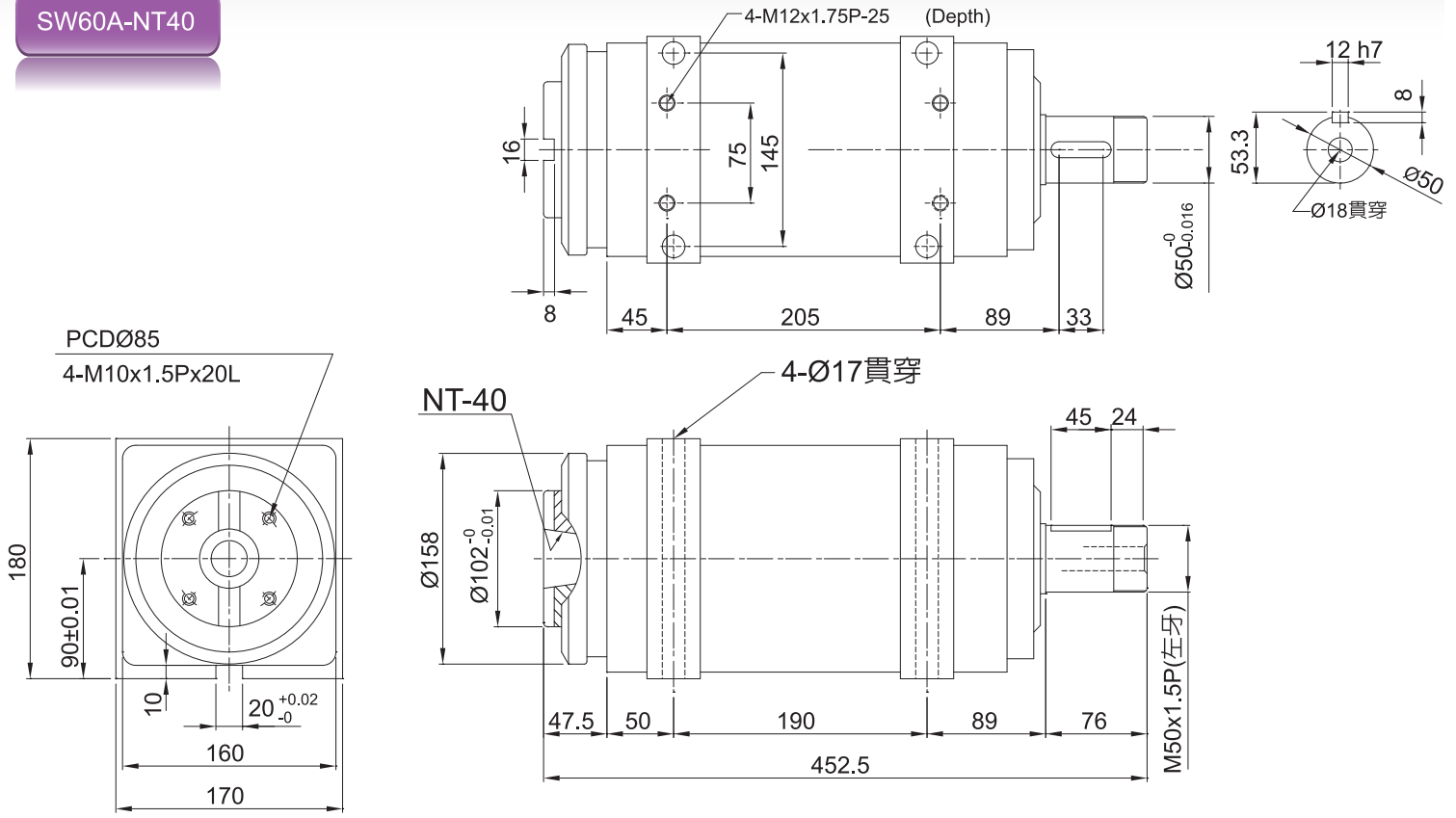


SW-60

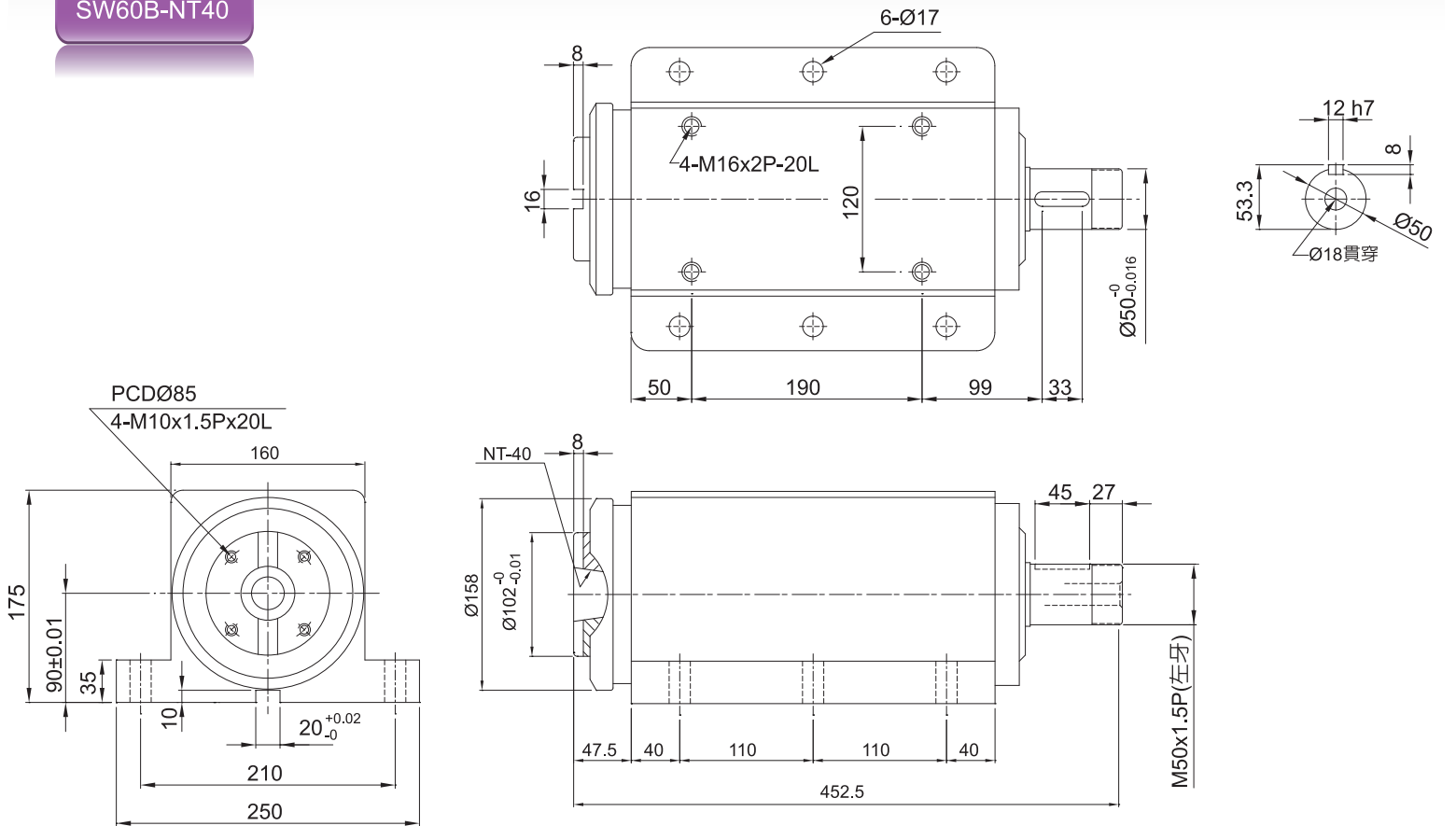
搪銑主軸頭 Boring & Milling Spindles Units

規格 Norms	Model	SW-60	SW-60H
主軸軸承	Spindle Bearing	32212/6212Z-32211/6211Z	7212-2 7211-2
容許轉速	Spindle Max. Speed	1700RPM	4000RPM
上升溫度	Temperature Rise	20°C	20°C
容許馬力	Maximum use of motor	3.7KW(5HP)	
主軸真圓度	Spindle Roundness	主軸與刀具配合面 MAX: 0.005mm	
潤滑方式	Lubrication method	Grease 潤滑油脂	
淨重	Net Weight	60kg	

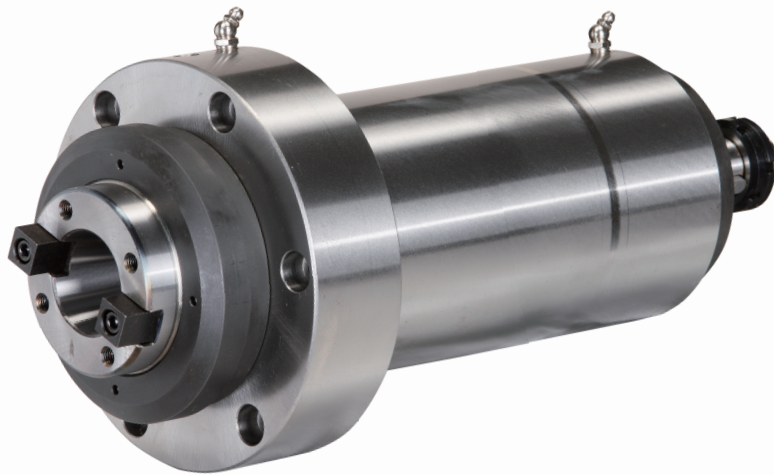
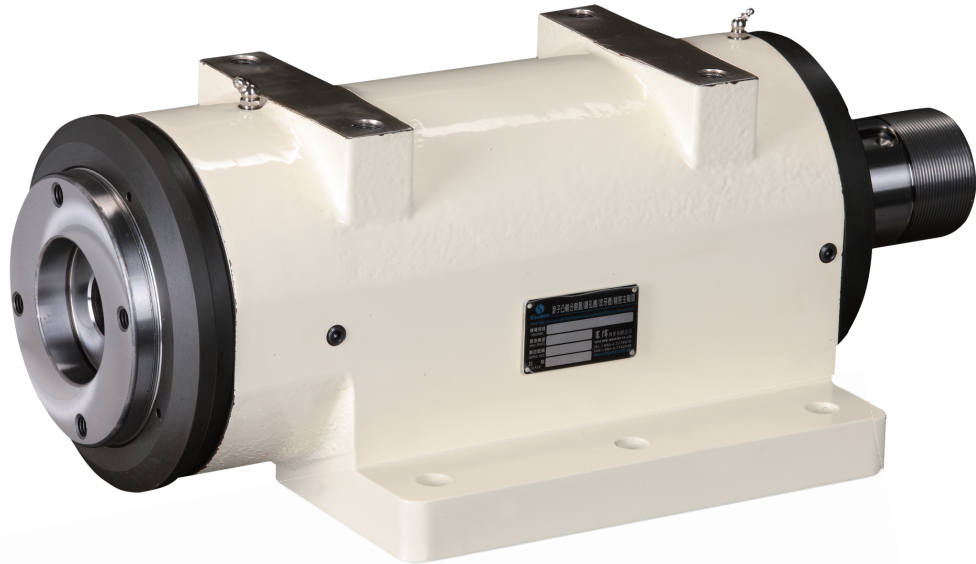
SW60A-NT40



SW60B-NT40



主軸頭 >>>

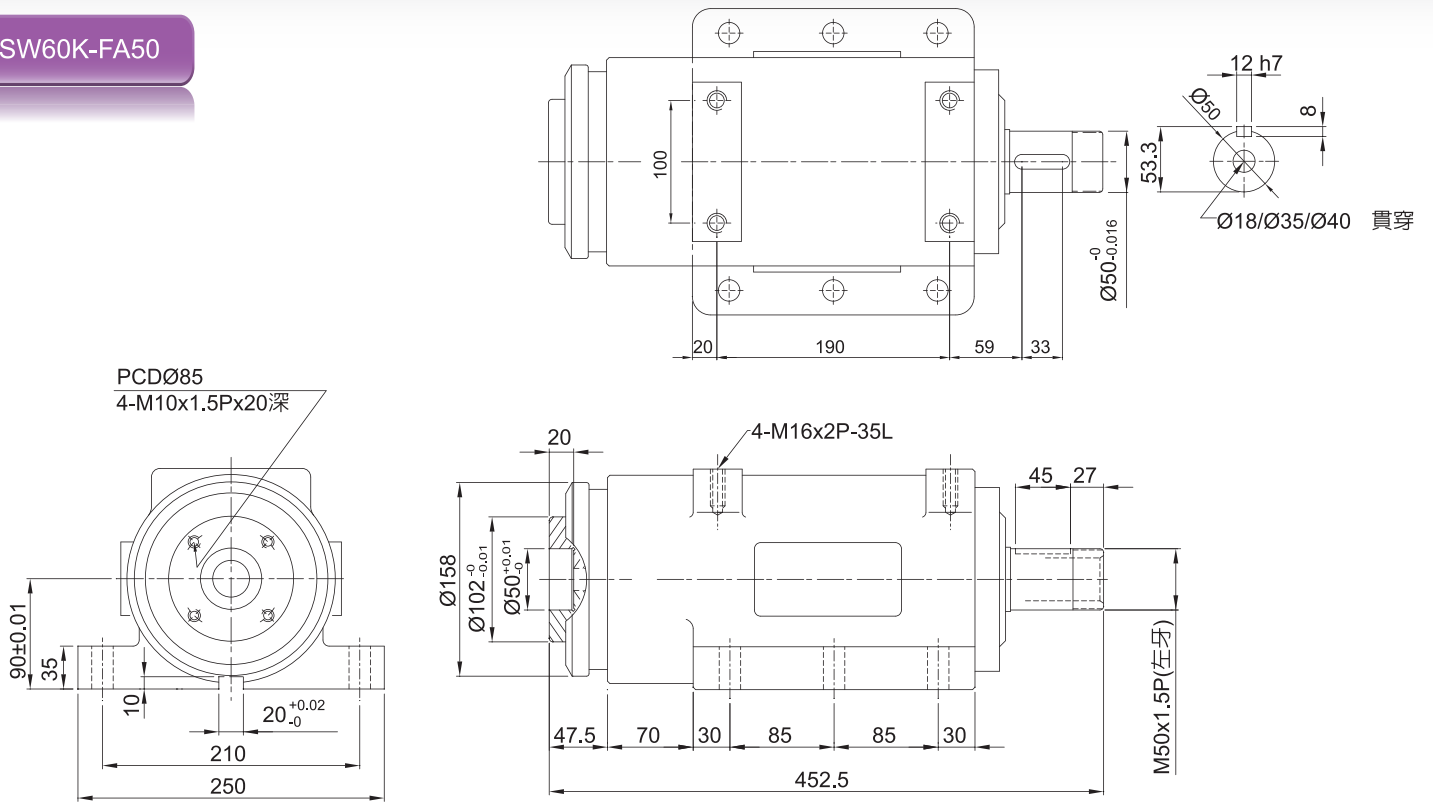


SW-60

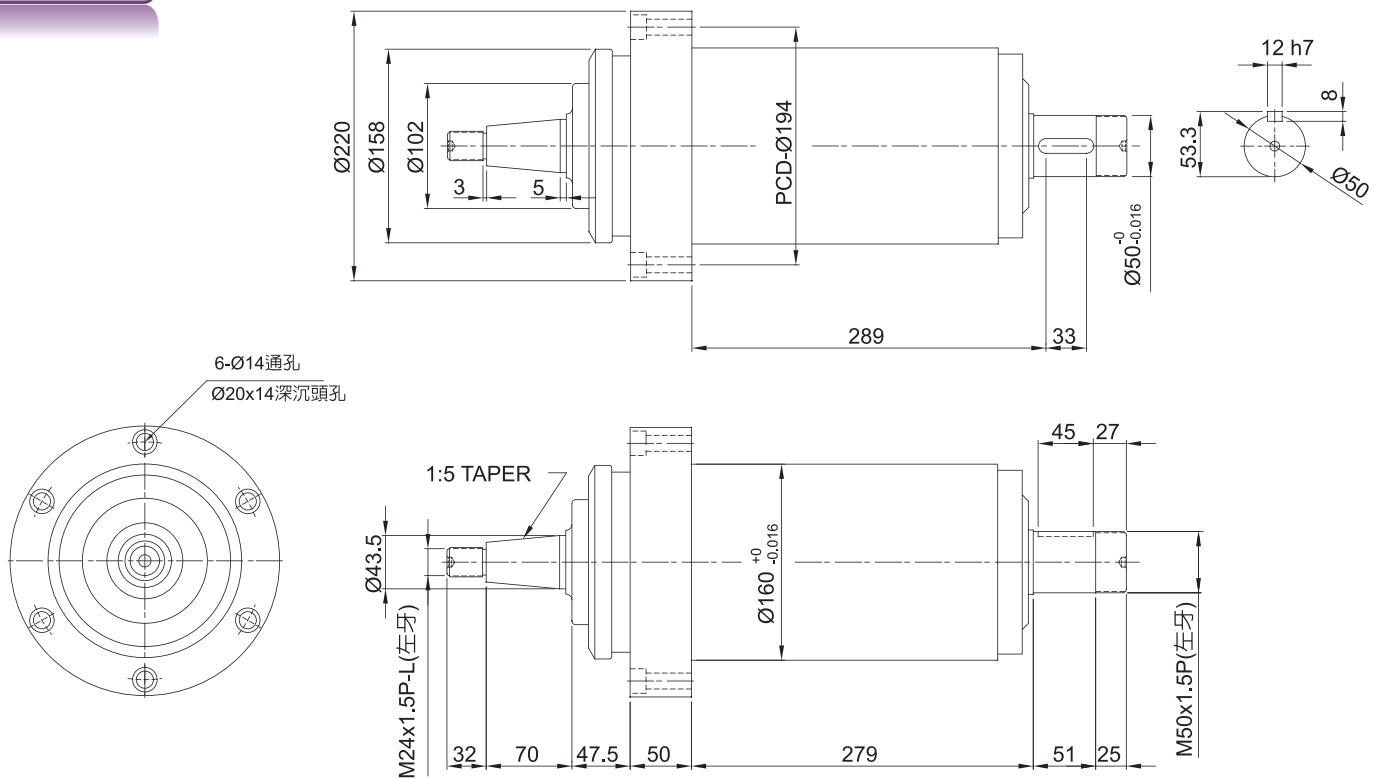
搪銑主軸頭 Boring & Milling Spindles Units

規格 Norms	Model	SW-60	SW-60H
主軸軸承	Spindle Bearing	32212/6212Z-32211/6211Z	7212-2 7211-2
容許轉速	Spindle Max. Speed	1700RPM	4000RPM
上升溫度	Temperature Rise	20°C	20°C
容許馬力	Maximum use of motor	3.7KW(5HP)	
主軸真圓度	Spindle Roundness	主軸與刀具配合面 MAX: 0.005mm	
潤滑方式	Lubrication method	Grease 潤滑油脂	
淨重	Net Weight	60kg	

SW60K-FA50



SW60R-1:5



主軸頭 >>>

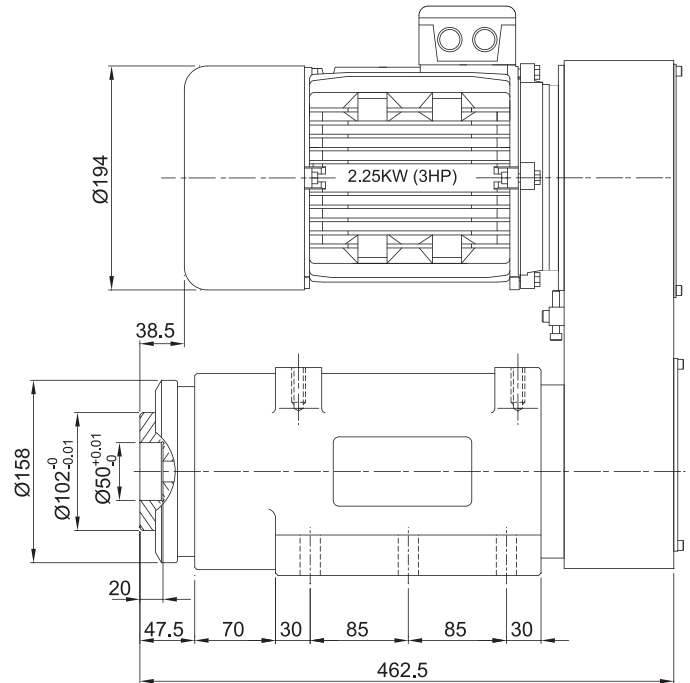
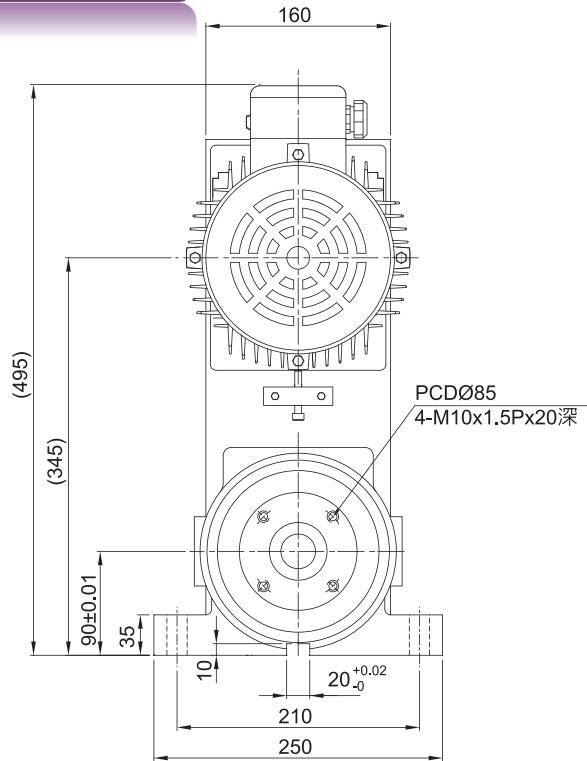


SW-60

搪銑主軸頭 Boring & Milling Spindles Units

規格 Norms	Model	SW-60	SW-60H
主軸軸承	Spindle Bearing	32212/6212Z-32211/6211Z	7212-2 7211-2
容許轉速	Spindle Max. Speed	1700RPM	4000RPM
上升溫度	Temperature Rise	20°C	20°C
容許馬力	Maximum use of motor	3.7KW(5HP)	
主軸真圓度	Spindle Roundness	主軸與刀具配合面 MAX: 0.005mm	
潤滑方式	Lubrication method	Grease 潤滑油脂	
淨重	Net Weight	60kg	

SW60K-FA50-A



SW60K-NT40-C

